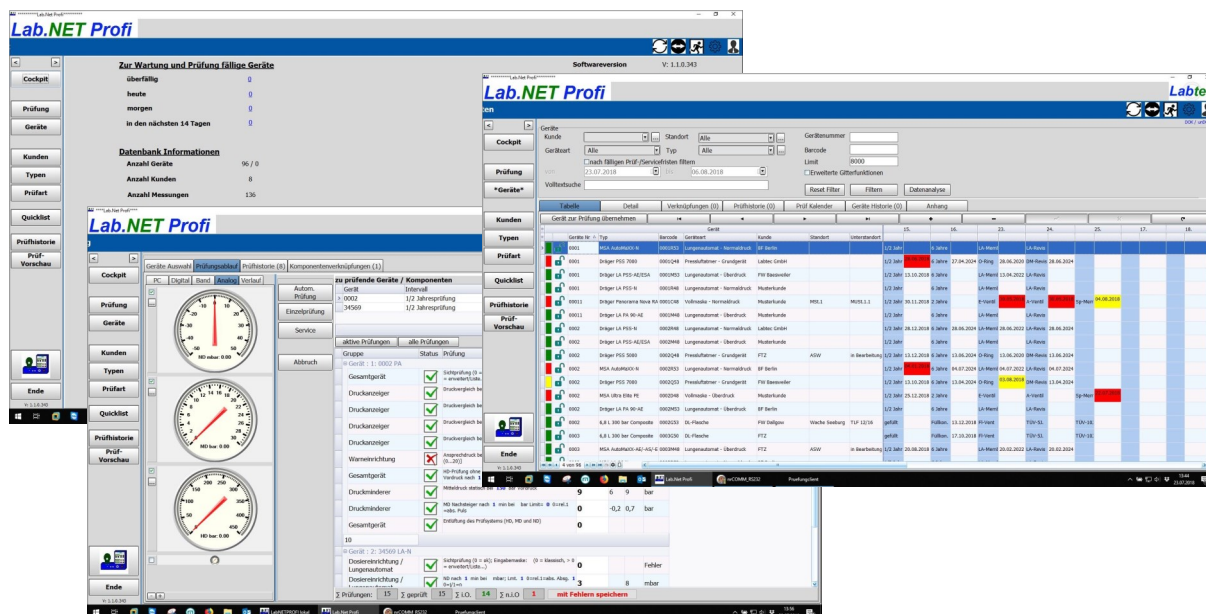


LabNet Profi

Test and device management software



Description

Completely new test and instrument management software in a revised layout, with new functions and optimized, intuitive operation based on a modern MySQL database.

LabNet Profi replaces the previous version Lab.NET 2.6 and comes free of charge with every computer-aided test bench of the current LabModul series.

Optionen / Erweiterungen

Mobile - Module for online/offline operation of individual clients in multi-user systems for parallel, mobile test operation and/or mobile device data acquisition with subsequent Data reconciliation.

Filling - Special version for operation on a bottle filling line with the integrated QUICKLIST collective detection

Office - Special version for operation without Labtec test bench e.g. for device management in the network and data evaluation

Highlights

- Improved, stable data transmission
- Completely translated in 5 languages
- Client-Server operation without additional costs
- Optimized operation and workflows
- Optional acquisition of the entire device or individual components with the possibility of linking and chained testing of individual components.
- Extension of device types
- **QUICKLIST** - Batch processing module for
 - delivery notes
 - customer and location change
 - bottle filling
 - decommissioning
- Optimized for Microsoft Windows 10

Labtec GmbH
Meckesheimer Straße 2
D - 74927 Eschelbronn

Phone: +49(0)6226 / 158 73 00
Fax: +49(0)6226 / 158 73 10
E-Mail: info@labtec.de
Internet: www.labtec.de

LabNet Profi is the new operating software for all electronic, computer-assisted Labtec test systems for fully automatic and semi-automatic test bench operation,

LabNet Profi is fully network-compatible and can be used both for single-user and multi-user systems in parallel network operation, so that several test benches can be operated simultaneously without restrictions.

LabNet Profi multi-language capable. The factory languages German, English, Dutch, French and Polish are available.

LabNet Profi has an extensive user administration with access and rights control. Special access rights, protected by user name and password, can be assigned for the individual work areas of data administration, testing, administration of the type database, test types, etc.

LabNet Profi is extremely flexible with regard to system settings, extensions and additions and can be individually adapted and optimized by the user to his requirements and workflows. This allows test types to be freely defined, the test scope to be defined for each device type and the test sequence to be changed if necessary.

LabNet Profi contains a comprehensive type database with the manufacturer's specified test parameters (test times, test pressures, volume flows, etc.). These can be individually edited by the user for each individual device type.

Respiratory protective devices, which consist of several components, can be created either as a complete device or as individual components. Individual components can be individually linked as a unit and tested together in a chained test sequence. Each component is evaluated individually.

A comprehensive device administration with a multitude of filter functions enables the monitoring, display and evaluation of test and service dates as well as the printing of test and device protocols documenting the life cycle of a device.

The new **QUICKLIST** module is used for the collective recording and processing of devices and has the functions delivery note for device acceptance and issue, customer and location change, bottle filling with signature, and decommissioning of several devices.

In addition to export functions for data in xls, csv, html or txt format, LabNet Profi offers an xml interface as standard for data transfer into programs of other manufacturers.

LabNet Profi is prepared for operation with barcode or transponder reading systems and enables the identification of breathing apparatus to be tested within seconds by using suitable hardware. By connecting a suitable printer-barcode labels can be printed out by yourself.

Voraussetzungen

A suitable PC is required for operation according to the given technical specification.

The new test software is available as an upgrade for existing Labtec test systems based on the previous version LabNET 2.6 or LabtronicNT.

Further information is available directly from Labtec or from your local sales partner